

Allied Data TECHNOLOGIES



Port forwarding/ reserved mapping guide (NL)

CopperJet 16xx series

Based on firmware 6.xx

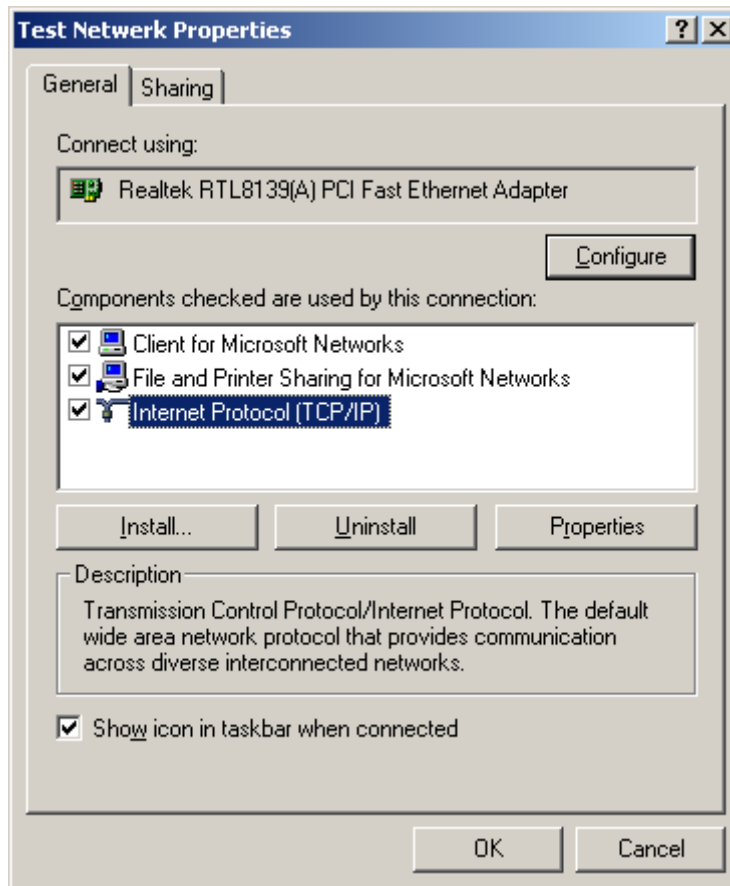
April 2009



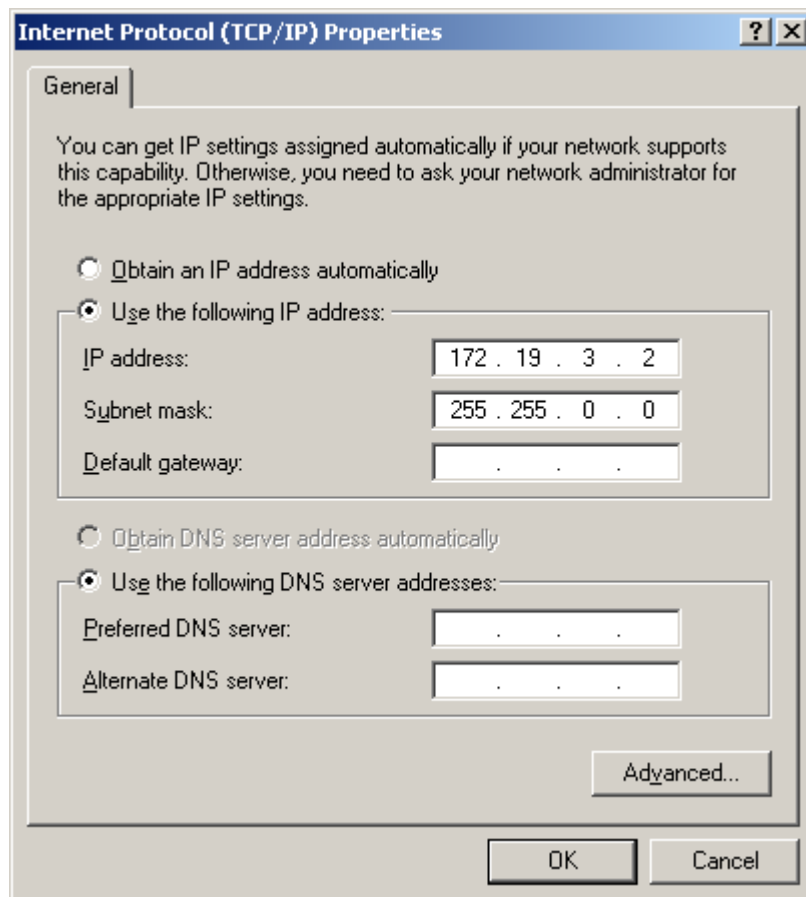
Hoe maak ik Port Forwardings ook wel Reserved Mappings genoemd in de CopperJet?

Zet als eerste een vast IP adres op de netwerk kaart. Ga hiervoor naar het configuratie scherm en selecteer de actieve netwerk verbinding en kies daar de eigenschappen van het Internet Protocol (TCP/IP).

Zie onderstaande afbeelding:



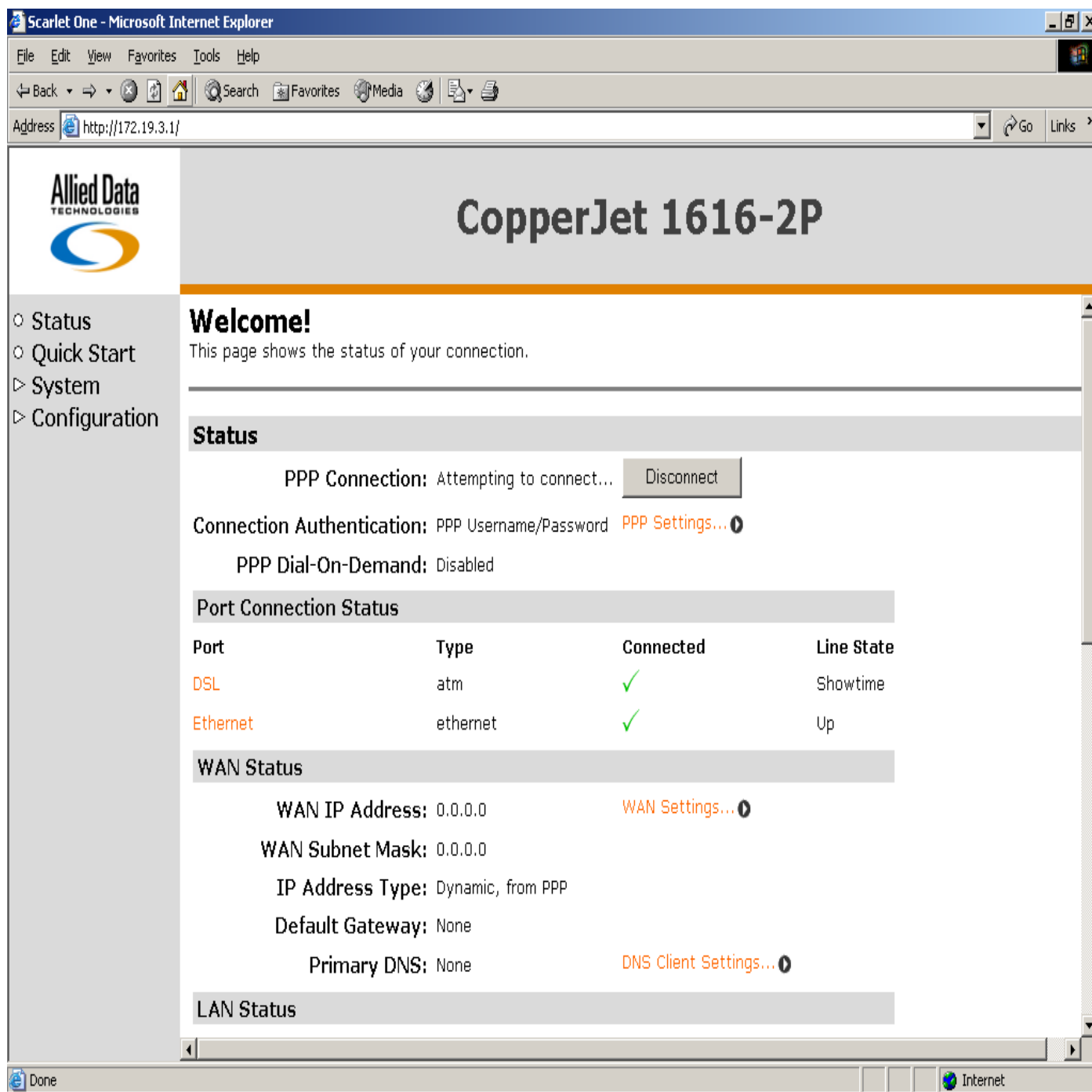
Geef hier het vaste IP adres in voor de CopperJet.
Zie onderstaande afbeelding:
:



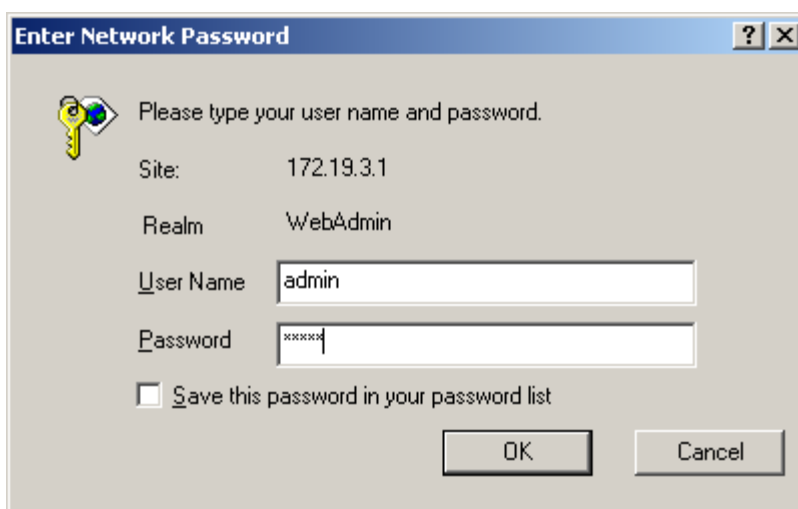
Klik op OK wanneer e.e.a. is ingevuld.

NOTE: Vergeet deze instellingen, na het configureren, weer terug te zetten naar “automatisch een IP adres verkrijgen” indien dit voorheen zo geconfigureerd was.

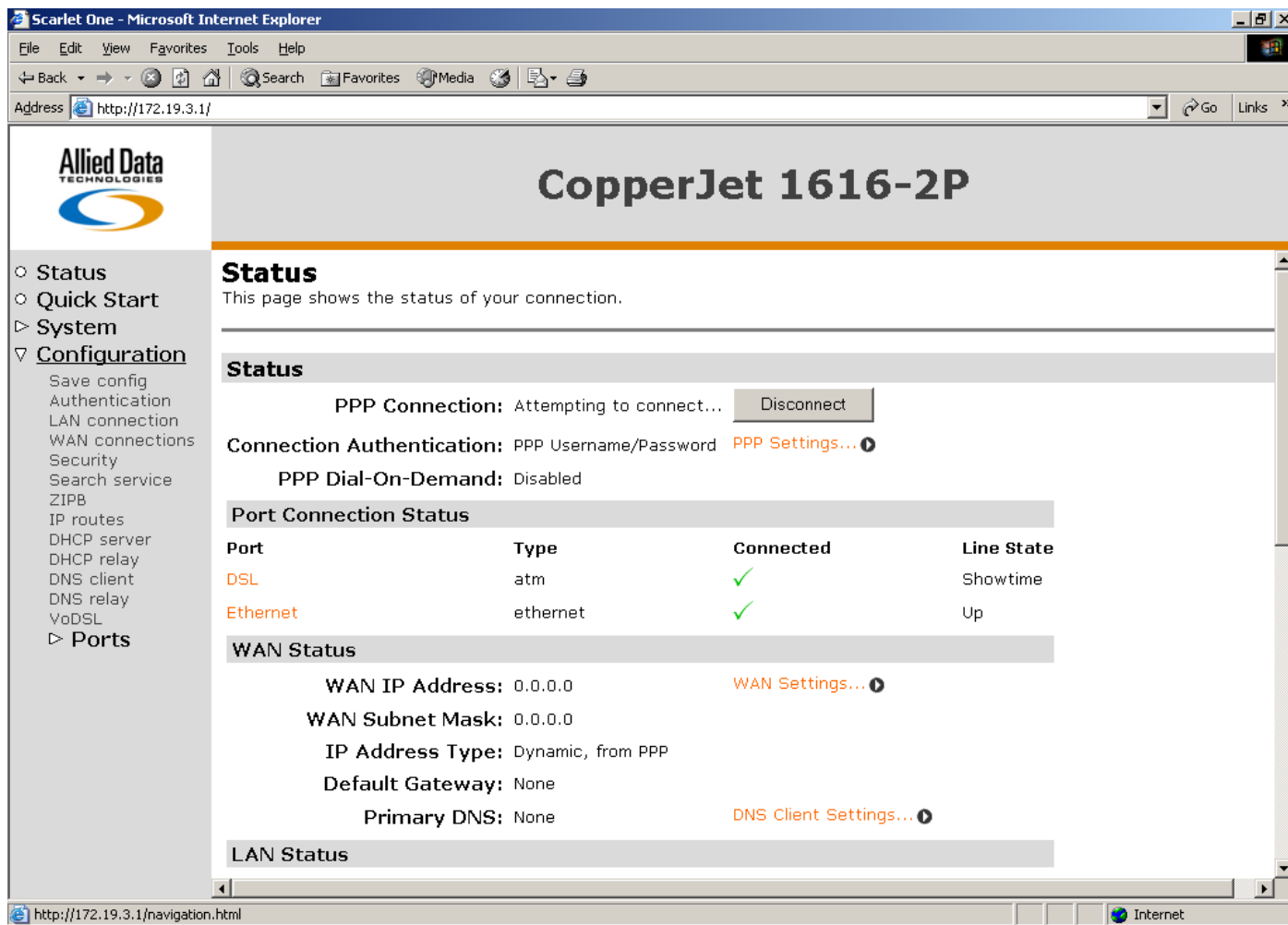
Start een Web browser op bijvoorbeeld Internet Explorer. Type vervolgens in de adres balk het volgende adres in: 172.19.3.1. U krijgt dan de WEB interface van de CopperJet te zien. Zie onderstaande afbeelding:



Log nu in met Uw eigen user name en password (standaard admin admin of wanneer de provider dit niet toestaat met user user).
Zie onderstaande afbeelding:

A screenshot of a Windows-style dialog box titled "Enter Network Password". The dialog has a blue title bar with a question mark icon and a close button. The main area is light gray and contains a yellow key icon with a globe on it. Below the icon, the text reads "Please type your user name and password." There are two lines of text: "Site: 172.19.3.1" and "Realm: WebAdmin". Below these are two text input fields: "User Name" containing the text "admin" and "Password" containing "*****". At the bottom left, there is a checkbox labeled "Save this password in your password list" which is currently unchecked. At the bottom right, there are two buttons: "OK" and "Cancel".

Ga nu naar Configuration (aan de linker zijde) in de webinterface en klik deze aan.
Zie onderstaande afbeelding:



Microsoft Internet Explorer
Address: http://172.19.3.1/

Allied Data TECHNOLOGIES

CopperJet 1616-2P

- Status
- Quick Start
- System
- Configuration**
 - Save config
 - Authentication
 - LAN connection
 - WAN connections
 - Security
 - Search service
 - ZIPB
 - IP routes
 - DHCP server
 - DHCP relay
 - DNS client
 - DNS relay
 - VoDSL
 - Ports

Status

This page shows the status of your connection.

Status

PPP Connection: Attempting to connect... [Disconnect](#)

Connection Authentication: PPP Username/Password [PPP Settings...](#)

PPP Dial-On-Demand: Disabled

Port Connection Status

Port	Type	Connected	Line State
DSL	atm	✓	Showtime
Ethernet	ethernet	✓	Up

WAN Status

WAN IP Address: 0.0.0.0 [WAN Settings...](#)

WAN Subnet Mask: 0.0.0.0

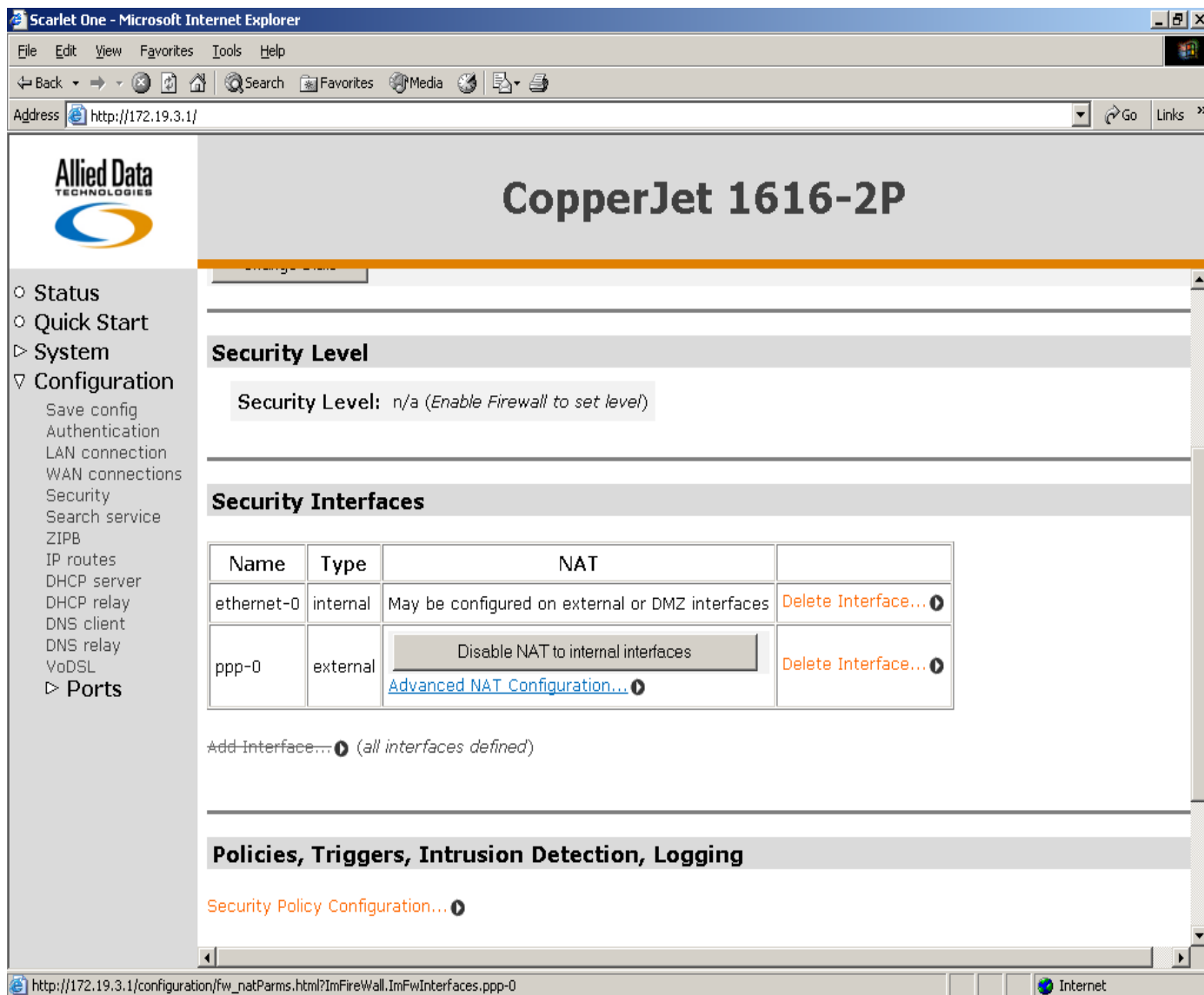
IP Address Type: Dynamic, from PPP

Default Gateway: None

Primary DNS: None [DNS Client Settings...](#)

LAN Status

Klik vervolgens op Security.
Zie onderstaande afbeelding:



CopperJet 1616-2P

Security Level

Security Level: n/a (Enable Firewall to set level)

Security Interfaces

Name	Type	NAT	
ethernet-0	internal	May be configured on external or DMZ interfaces	Delete Interface... ⓘ
ppp-0	external	<input type="button" value="Disable NAT to internal interfaces"/> Advanced NAT Configuration... ⓘ	Delete Interface... ⓘ

Add interface... ⓘ (all interfaces defined)

Policies, Triggers, Intrusion Detection, Logging

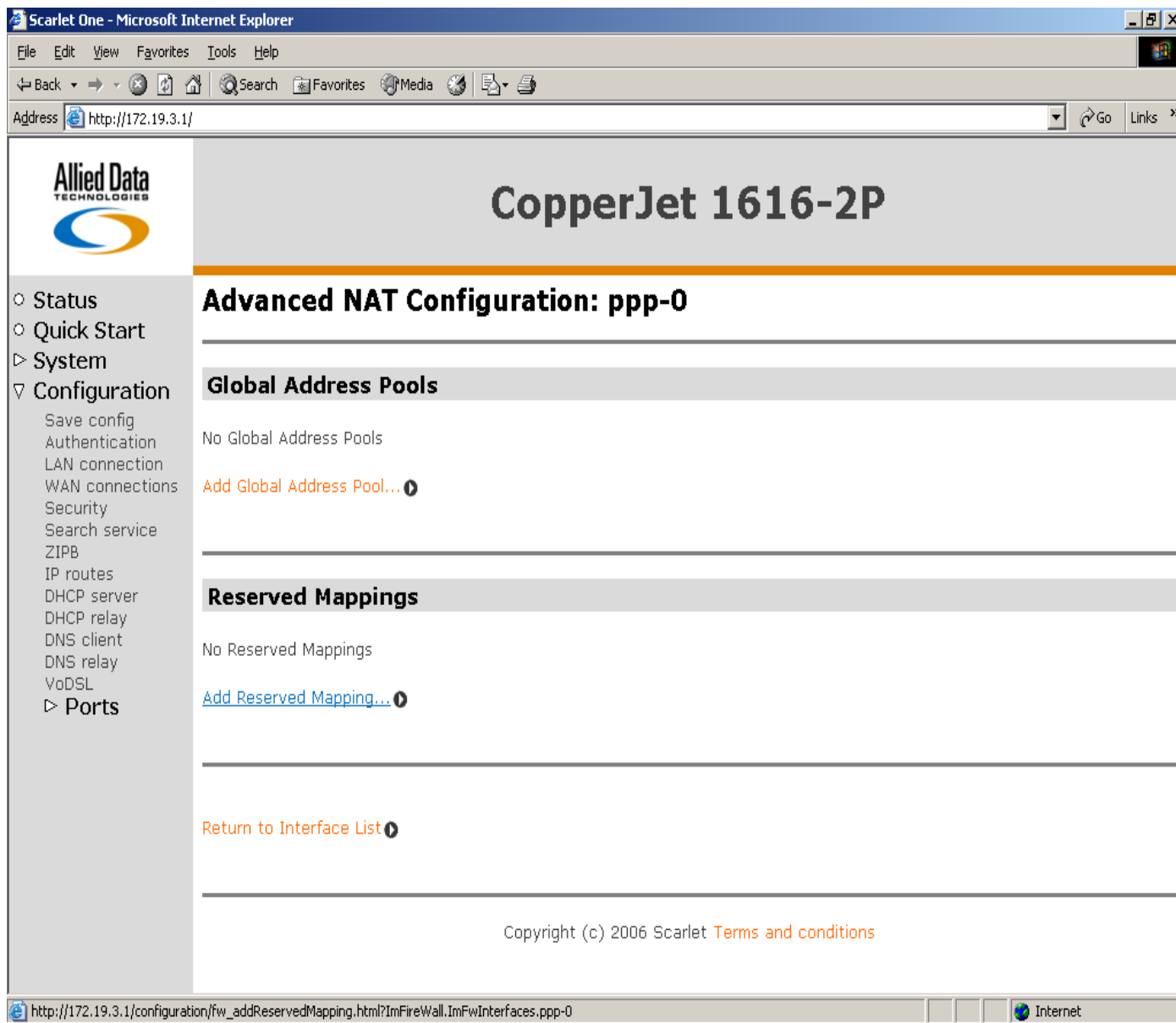
[Security Policy Configuration... ⓘ](#)

Address: http://172.19.3.1/

http://172.19.3.1/configuration/fw_natParams.html?ImFireWall.ImFwInterfaces.ppp-0

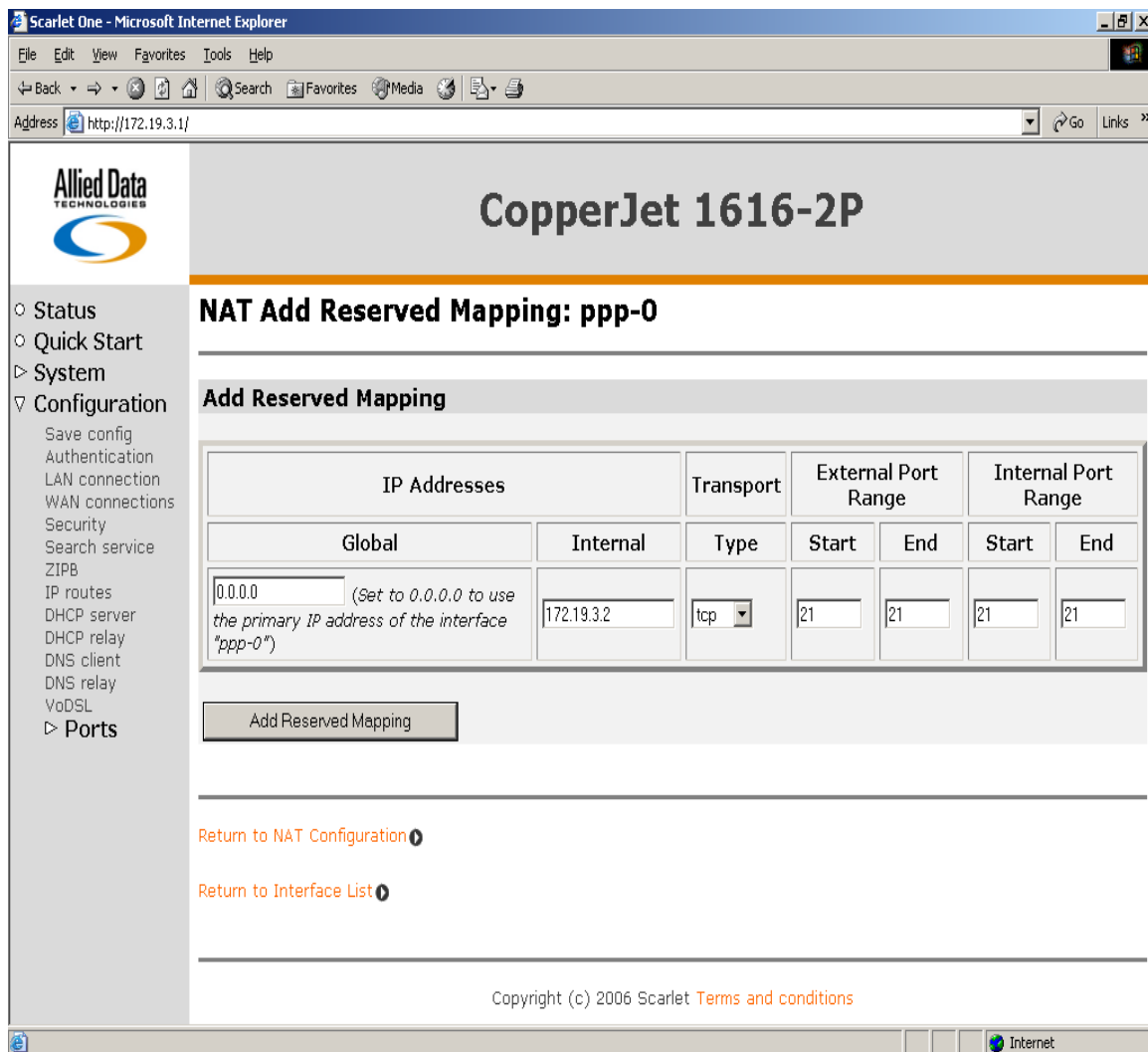
Klik vervolgens op de link Advanced NAT Configuration.

Zie onderstaande afbeelding:



The screenshot shows a Microsoft Internet Explorer browser window titled "Scarlet One - Microsoft Internet Explorer". The address bar displays "http://172.19.3.1/". The main content area features the Allied Data Technologies logo on the left and the title "CopperJet 1616-2P" on the right. Below the title, the page is titled "Advanced NAT Configuration: ppp-0". The left sidebar contains a navigation menu with the following items: Status, Quick Start, System, Configuration (expanded), Save config, Authentication, LAN connection, WAN connections, Security, Search service, ZIPB, IP routes, DHCP server, DHCP relay, DNS client, DNS relay, VoDSL, and Ports. The main content area is divided into sections: "Global Address Pools" (No Global Address Pools, Add Global Address Pool...), "Reserved Mappings" (No Reserved Mappings, Add Reserved Mapping...), and "Return to Interface List". At the bottom, there is a copyright notice: "Copyright (c) 2006 Scarlet Terms and conditions". The status bar at the bottom of the browser shows the full URL: "http://172.19.3.1/configuration/fw_addReservedMapping.html?ImFireWall.ImFwInterfaces.ppp-0" and the Internet icon.

Klik nu op de link Add Reserved Mapping.
Zie onderstaande afbeelding:

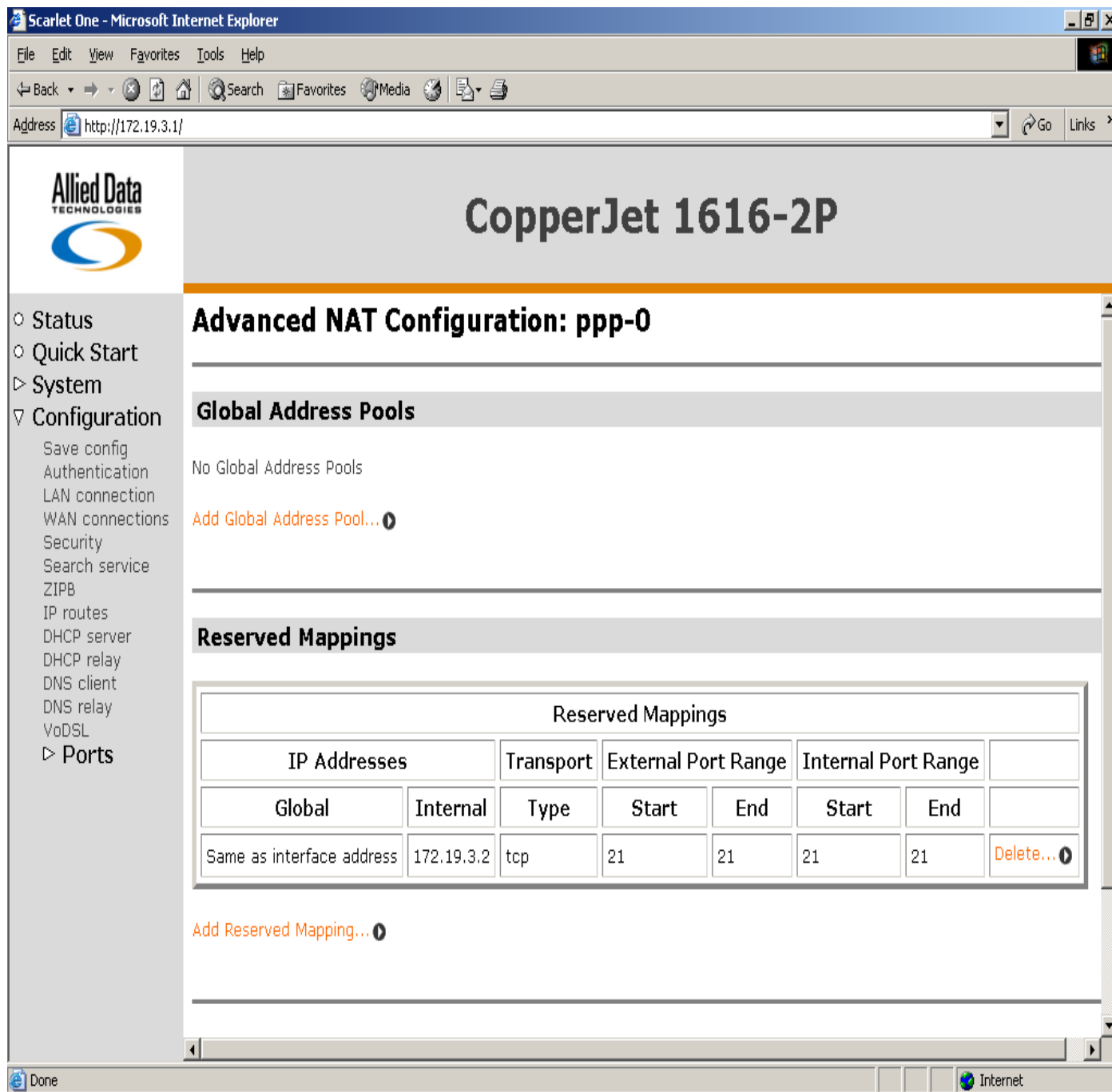


The screenshot shows a web browser window titled "Scarlet One - Microsoft Internet Explorer" with the address bar set to "http://172.19.3.1/". The page content includes the Allied Data Technologies logo and the title "CopperJet 1616-2P". A navigation menu on the left lists various configuration options, with "Configuration" expanded to show "Add Reserved Mapping". The main content area is titled "NAT Add Reserved Mapping: ppp-0" and contains a table for adding reserved mappings.

IP Addresses		Transport	External Port Range		Internal Port Range	
Global	Internal	Type	Start	End	Start	End
0.0.0.0 <small>(Set to 0.0.0.0 to use the primary IP address of the interface "ppp-0")</small>	172.19.3.2	tcp	21	21	21	21

Below the table is an "Add Reserved Mapping" button. At the bottom of the page, there are links for "Return to NAT Configuration" and "Return to Interface List", and a copyright notice: "Copyright (c) 2006 Scarlet Terms and conditions".

Vul hier de correcte informatie in. In dit voorbeeld wordt port 21 open gezet. Uiteraard kan dat ook een port range zijn indien gewenst. Kies het gewenste transport type of all indien niet bekend. Het Global IP adres kan op 0.0.0.0 blijven staan. Het local IP adres dient zich altijd in het zelfde subnet te bevinden als de CopperJet, in dit geval 172.19..... Klik op Add Reserved Mapping als alles correct is ingevuld.



Scarlet One - Microsoft Internet Explorer

Address: http://172.19.3.1/

Allied Data Technologies

CopperJet 1616-2P

Advanced NAT Configuration: ppp-0

- Status
- Quick Start
- System
- Configuration
 - Save config
 - Authentication
 - LAN connection
 - WAN connections
 - Security
 - Search service
 - ZIPB
 - IP routes
 - DHCP server
 - DHCP relay
 - DNS client
 - DNS relay
 - VoDSL
 - Ports

Global Address Pools

No Global Address Pools

[Add Global Address Pool...](#)

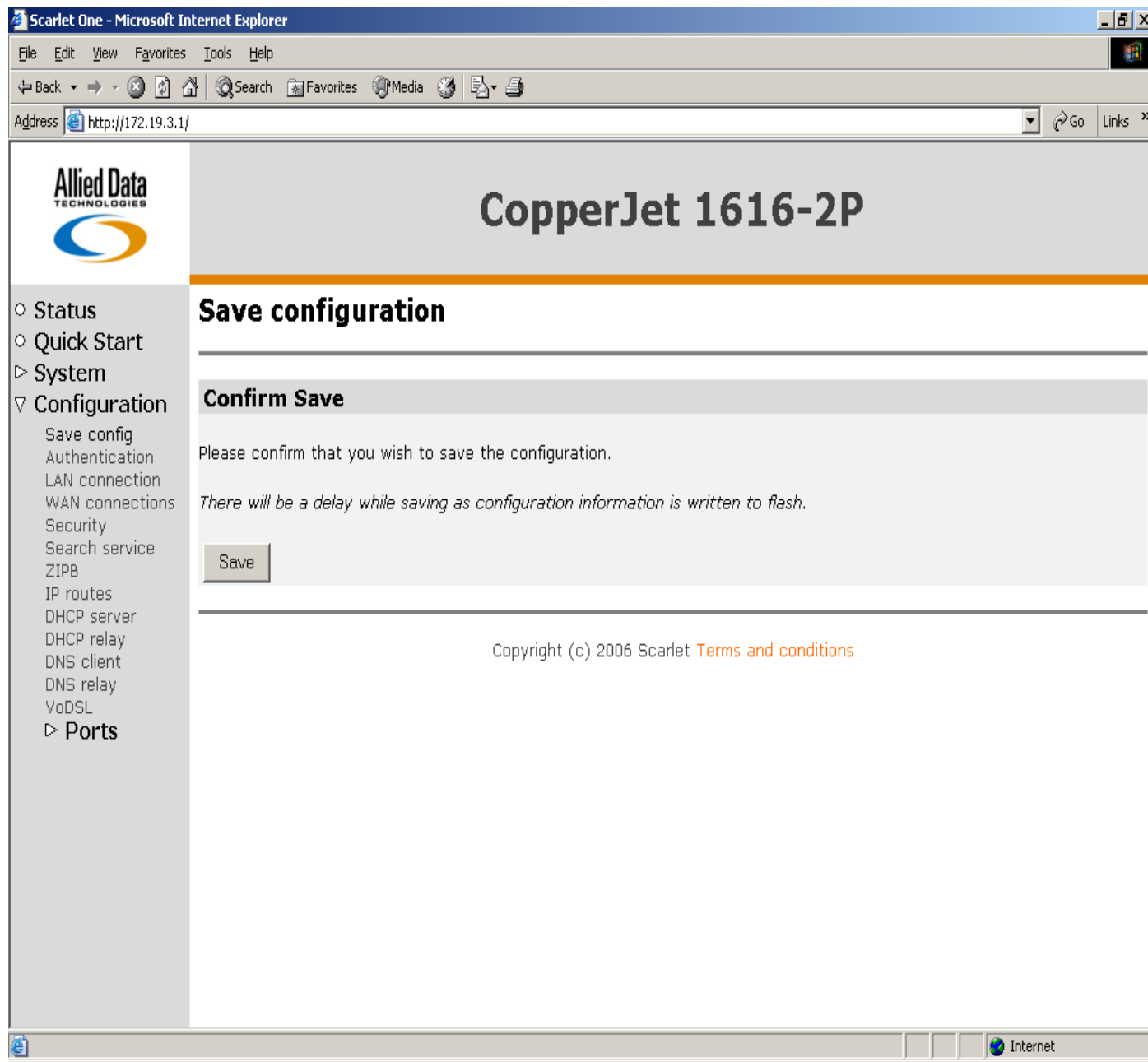
Reserved Mappings

Reserved Mappings							
IP Addresses		Transport	External Port Range		Internal Port Range		
Global	Internal	Type	Start	End	Start	End	
Same as interface address	172.19.3.2	tcp	21	21	21	21	Delete...

[Add Reserved Mapping...](#)

Vergeet niet op Save config te klikken om e.e.a. op te slaan. U kunt dit doen door in de web interface te gaan naar Configuration.

Klik hier op Save config en klik op de knop Save zie onderstaande afbeelding:



P.S.

Indien de CopperJet als bridge staat ingesteld, dient u geen poorten (Reserved Mappings) in de CopperJet aan te maken. Dit dient uw provider wel te ondersteunen / toe te staan. De CopperJet laat nu alles door dus een goede firewall is dan wel noodzakelijk.