

Allied Data TECHNOLOGIES



Port forwarding/ reserved mapping guide (UK)

CopperJet 16xx series

Based on firmware 6.xx

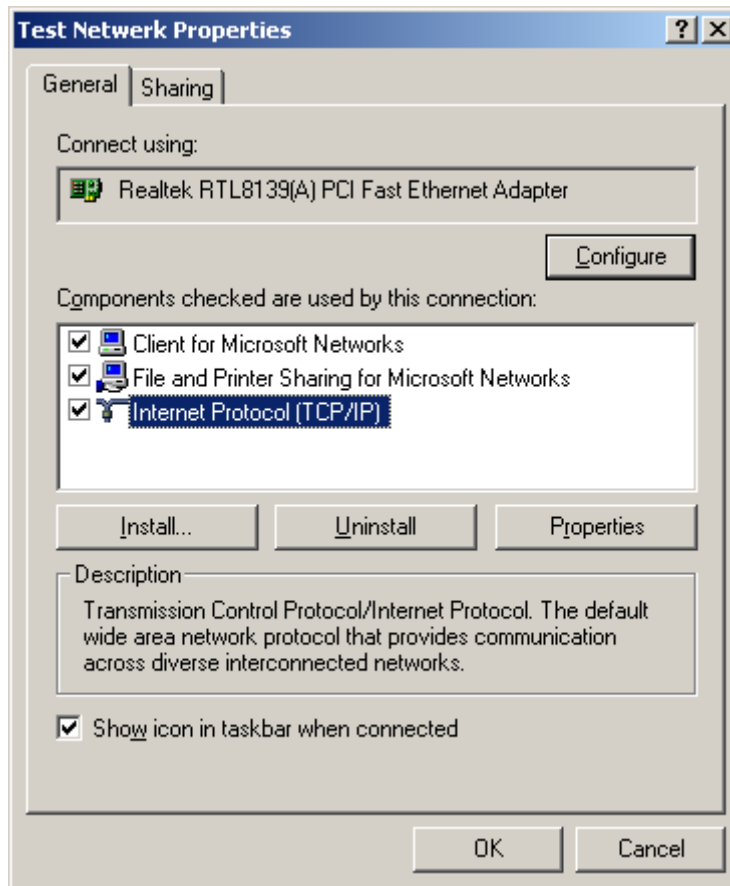
April 2009



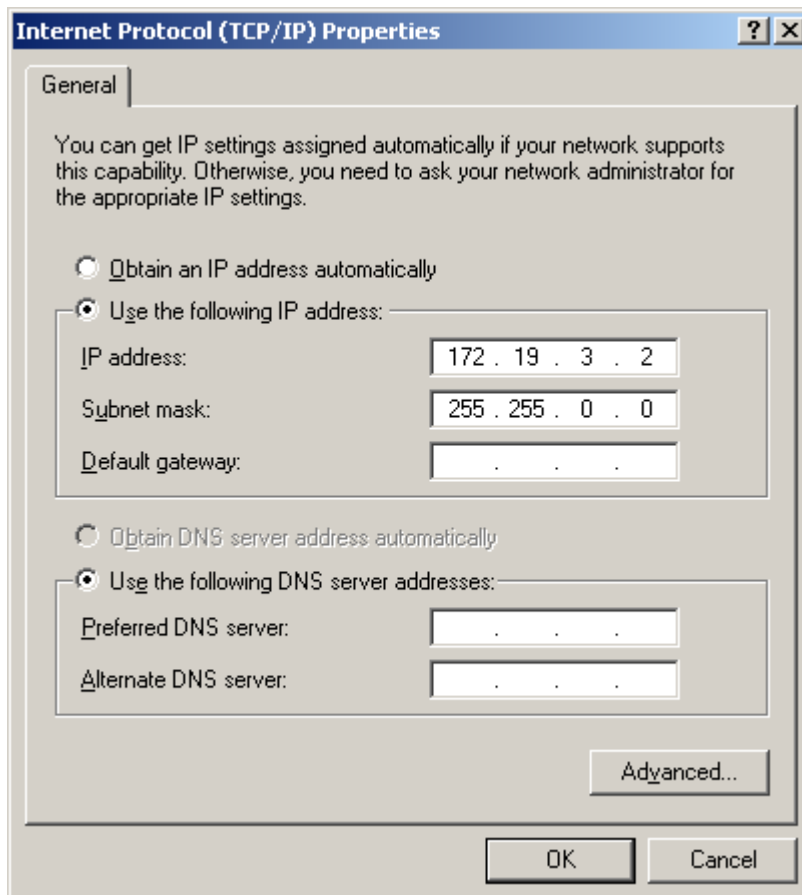
How to create Port Forwarding's also called Reserved Mappings in the CopperJet?

First put a fixed IP address on the network card (NIC). Go to Start -> Settings -> Configuration screen and select the active network connection. Choose the properties from the Internet Protocol v4 (TCP/IP).

See the illustration below:



Fill in the fixed IP address for the CopperJet.
See the illustration below:



Internet Protocol (TCP/IP) Properties ? X

General

You can get IP settings assigned automatically if your network supports this capability. Otherwise, you need to ask your network administrator for the appropriate IP settings.

Obtain an IP address automatically

Use the following IP address:

IP address: 172 . 19 . 3 . 2

Subnet mask: 255 . 255 . 0 . 0

Default gateway: . . .

Obtain DNS server address automatically

Use the following DNS server addresses:

Preferred DNS server: . . .

Alternate DNS server: . . .

Advanced...

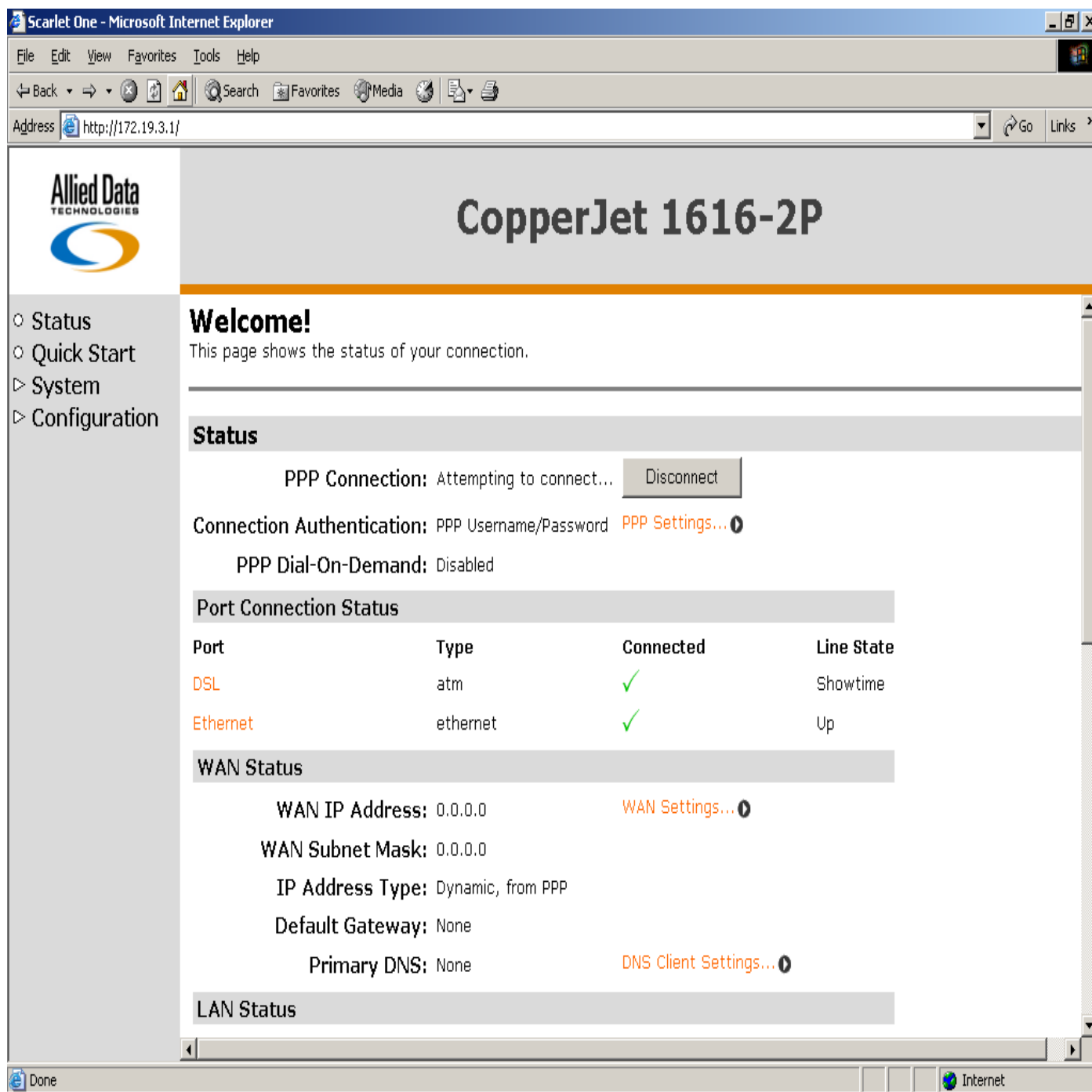
OK Cancel

Click on OK if you have filled out the required fields.

NOTE:

Don't forget to set back these settings to "Obtain an IP address and DNS server automatically" if this was configured before.

Open your Web browser, like Internet Explorer. Type the following address in the address bar: 172.19.3.1. Now you will see the Web interface of the CopperJet. See the illustration below:




Scarlet One - Microsoft Internet Explorer

File Edit View Favorites Tools Help

Back Forward Stop Home Search Favorites Media Print

Address <http://172.19.3.1/> Go Links



CopperJet 1616-2P

Welcome!
This page shows the status of your connection.

Status

PPP Connection: Attempting to connect... [Disconnect](#)

Connection Authentication: PPP Username/Password [PPP Settings...](#)

PPP Dial-On-Demand: Disabled

Port Connection Status

Port	Type	Connected	Line State
DSL	atm	✓	Showtime
Ethernet	ethernet	✓	Up

WAN Status

WAN IP Address: 0.0.0.0 [WAN Settings...](#)

WAN Subnet Mask: 0.0.0.0

IP Address Type: Dynamic, from PPP


Default Gateway: None

Primary DNS: None [DNS Client Settings...](#)

LAN Status

Done Internet

Log in with your own user name and password (standard admin admin or if the provider will not allow this use user user with restricted policies).
See the illustration below:

A screenshot of a Windows-style dialog box titled "Enter Network Password". The dialog has a blue title bar with a question mark and a close button. The main area is light gray and contains a yellow key icon with a globe on it. Below the icon is the text "Please type your user name and password." followed by "Site: 172.19.3.1" and "Realm: WebAdmin". There are two text input fields: "User Name" containing "admin" and "Password" containing "*****". At the bottom, there is a checkbox labeled "Save this password in your password list" which is unchecked, and two buttons labeled "OK" and "Cancel".

Enter Network Password

Please type your user name and password.

Site: 172.19.3.1

Realm: WebAdmin

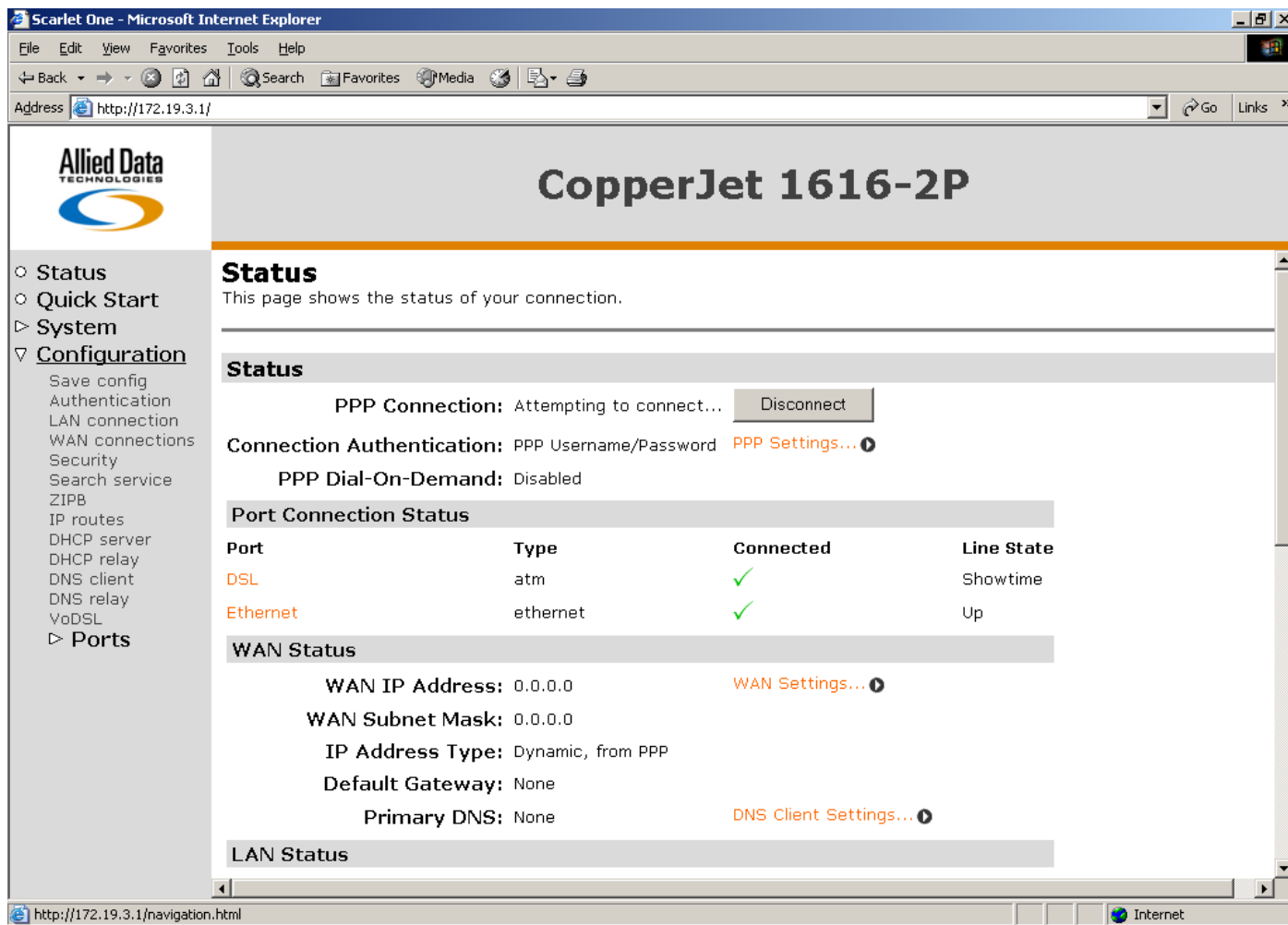
User Name: admin

Password: *****

Save this password in your password list

OK Cancel

Click on Configuration (at the left side) in the web interface.
See the illustration below:



Microsoft Internet Explorer
Address: http://172.19.3.1/

Allied Data Technologies

CopperJet 1616-2P

Status
This page shows the status of your connection.

Configuration

- Save config
- Authentication
- LAN connection
- WAN connections
- Security
- Search service
- ZIPB
- IP routes
- DHCP server
- DHCP relay
- DNS client
- DNS relay
- VoDSL
- Ports

Status

PPP Connection: Attempting to connect... [Disconnect](#)

Connection Authentication: PPP Username/Password [PPP Settings...](#)

PPP Dial-On-Demand: Disabled

Port Connection Status

Port	Type	Connected	Line State
DSL	atm	✓	Showtime
Ethernet	ethernet	✓	Up

WAN Status

WAN IP Address: 0.0.0.0 [WAN Settings...](#)

WAN Subnet Mask: 0.0.0.0

IP Address Type: Dynamic, from PPP

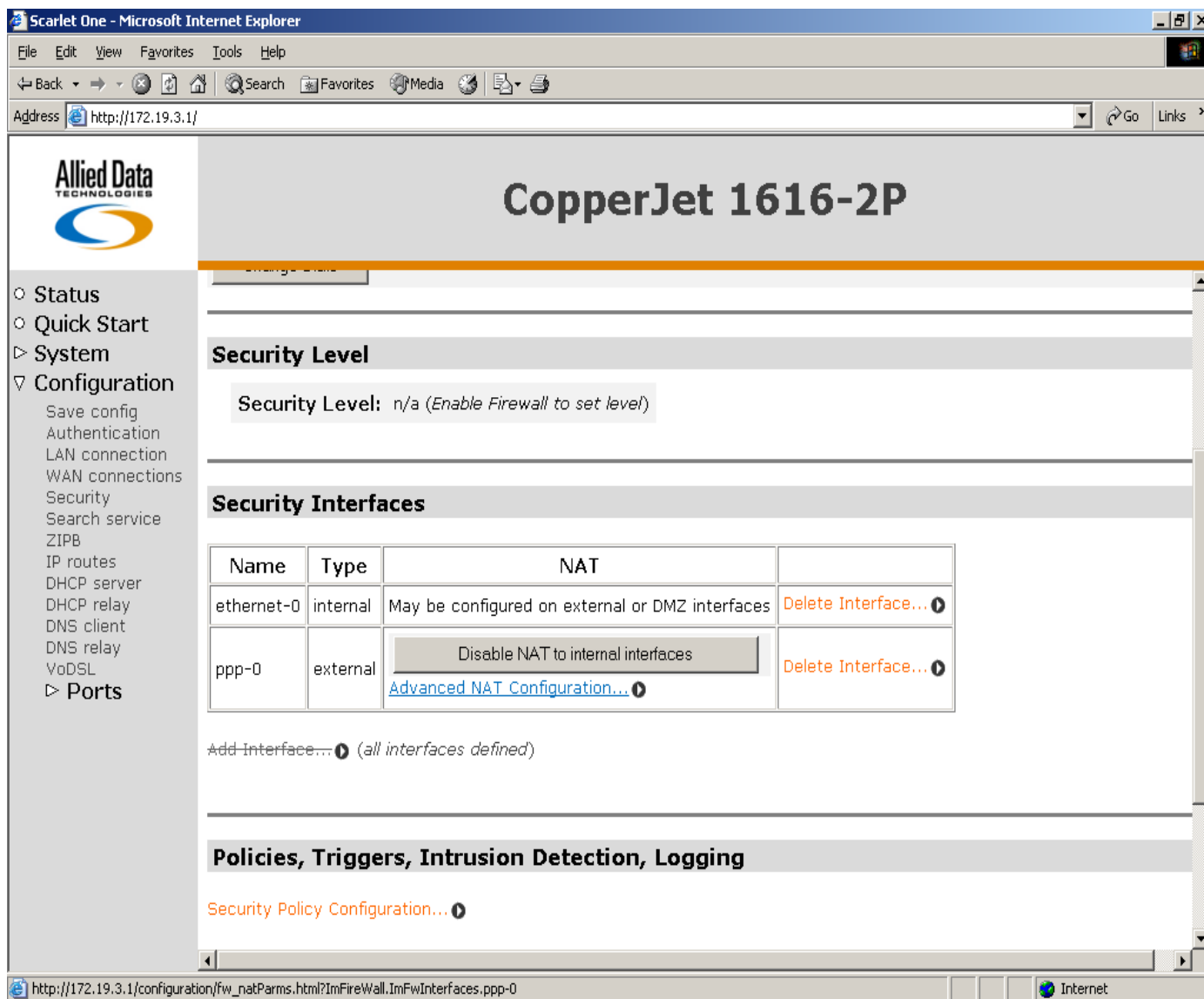
Default Gateway: None

Primary DNS: None [DNS Client Settings...](#)

LAN Status

http://172.19.3.1/navigation.html

Click now on Security.
See the illustration below:



The screenshot shows the web interface for the CopperJet 1616-2P device. The browser window is titled "Scarlet One - Microsoft Internet Explorer" and the address bar shows "http://172.19.3.1/". The page header includes the Allied Data Technologies logo and the device name "CopperJet 1616-2P".

On the left side, there is a navigation menu with the following items:

- Status
- Quick Start
- System
- Configuration
 - Save config
 - Authentication
 - LAN connection
 - WAN connections
 - Security
 - Search service
 - ZIPB
 - IP routes
 - DHCP server
 - DHCP relay
 - DNS client
 - DNS relay
 - VoDSL
- Ports

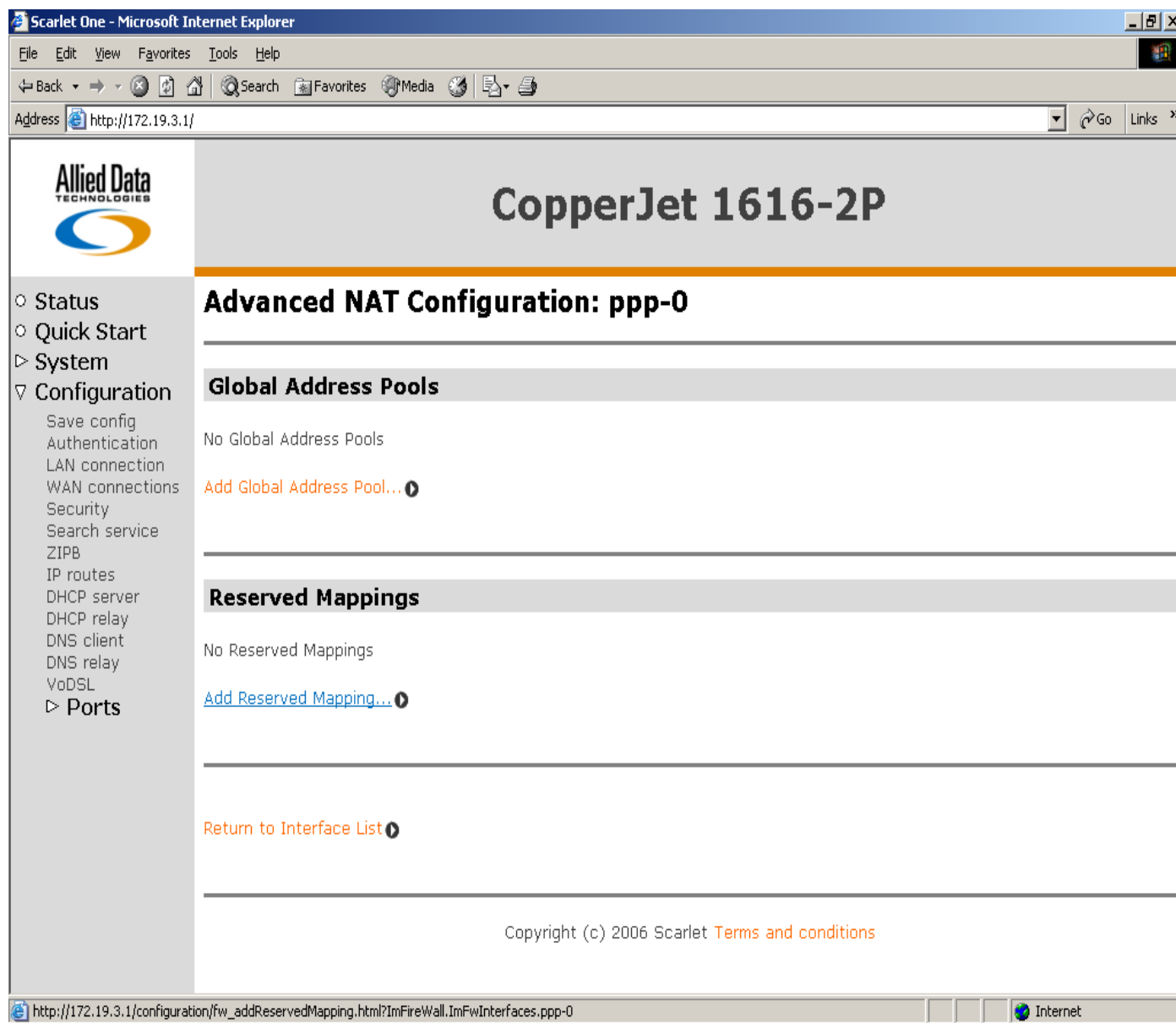
The main content area is divided into several sections:

- Security Level**: A section with a sub-section titled "Security Level" containing the text "Security Level: n/a (Enable Firewall to set level)".
- Security Interfaces**: A table listing NAT configurations for different interfaces.

Name	Type	NAT	
ethernet-0	internal	May be configured on external or DMZ interfaces	Delete Interface... ⓘ
ppp-0	external	<input type="button" value="Disable NAT to internal interfaces"/> Advanced NAT Configuration... ⓘ	Delete Interface... ⓘ
- Policies, Triggers, Intrusion Detection, Logging**: A section with a sub-section titled "Security Policy Configuration... ⓘ".

At the bottom of the page, there is a link "Add-Interface... ⓘ (all interfaces defined)". The browser's status bar at the bottom shows the URL "http://172.19.3.1/configuration/fw_natParams.html?ImFireWall.ImFwInterfaces.ppp-0" and the Internet icon.

Click now on the link Advanced NAT Configuration.
See the illustration below:




Scarlet One - Microsoft Internet Explorer

File Edit View Favorites Tools Help

Back Forward Stop Refresh Home Search Favorites Media Print

Address <http://172.19.3.1/> Go Links

 **CopperJet 1616-2P**

Advanced NAT Configuration: ppp-0

Global Address Pools

No Global Address Pools

[Add Global Address Pool...](#)

Reserved Mappings

No Reserved Mappings

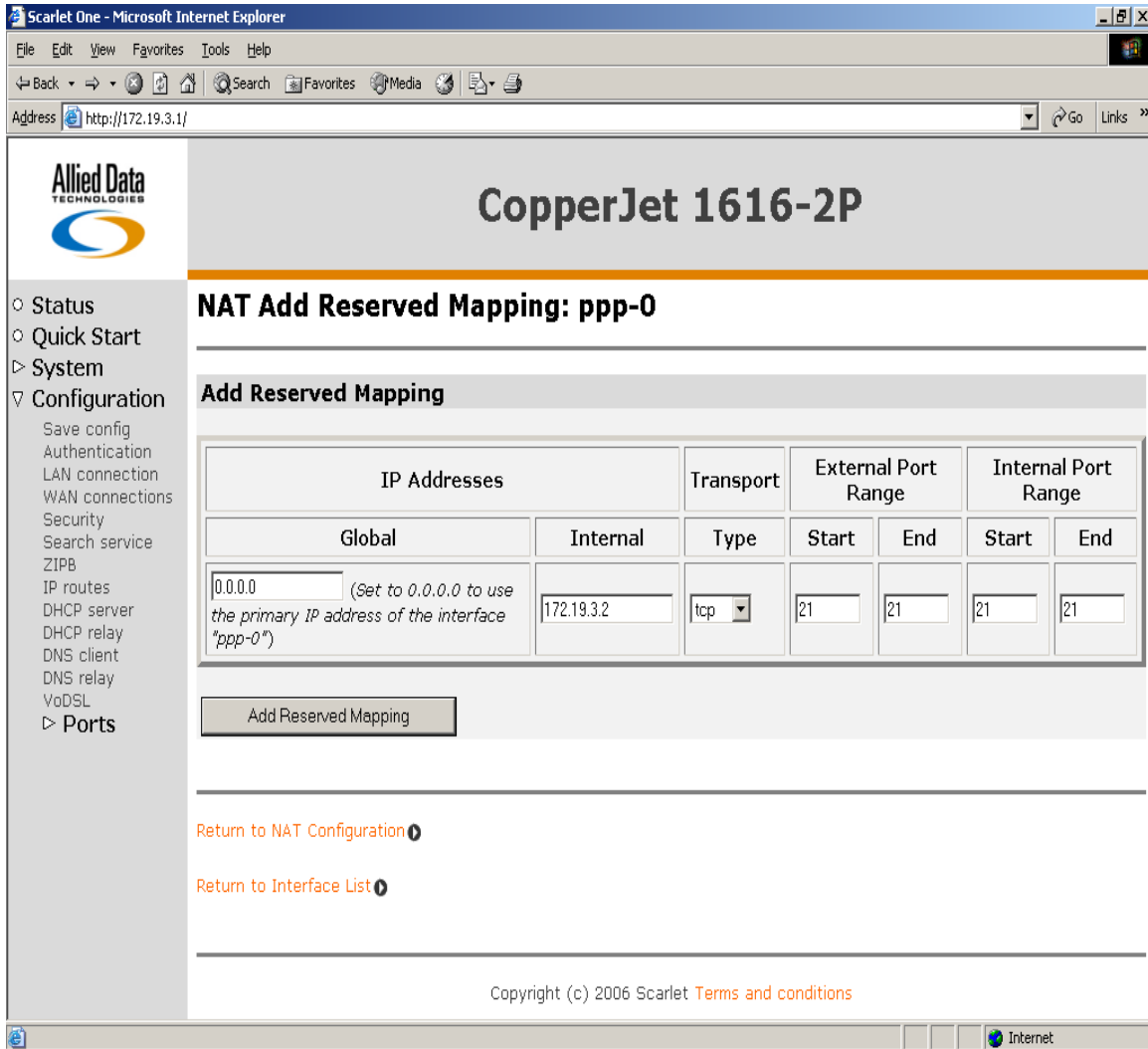
[Add Reserved Mapping...](#)

[Return to Interface List](#)

Copyright (c) 2006 Scarlet [Terms and conditions](#)

http://172.19.3.1/configuration/fw_addReservedMapping.html?ImFireWall.ImFwInterfaces.ppp-0 Internet

Click now on the link Add Reserved Mapping.
See the illustration below:

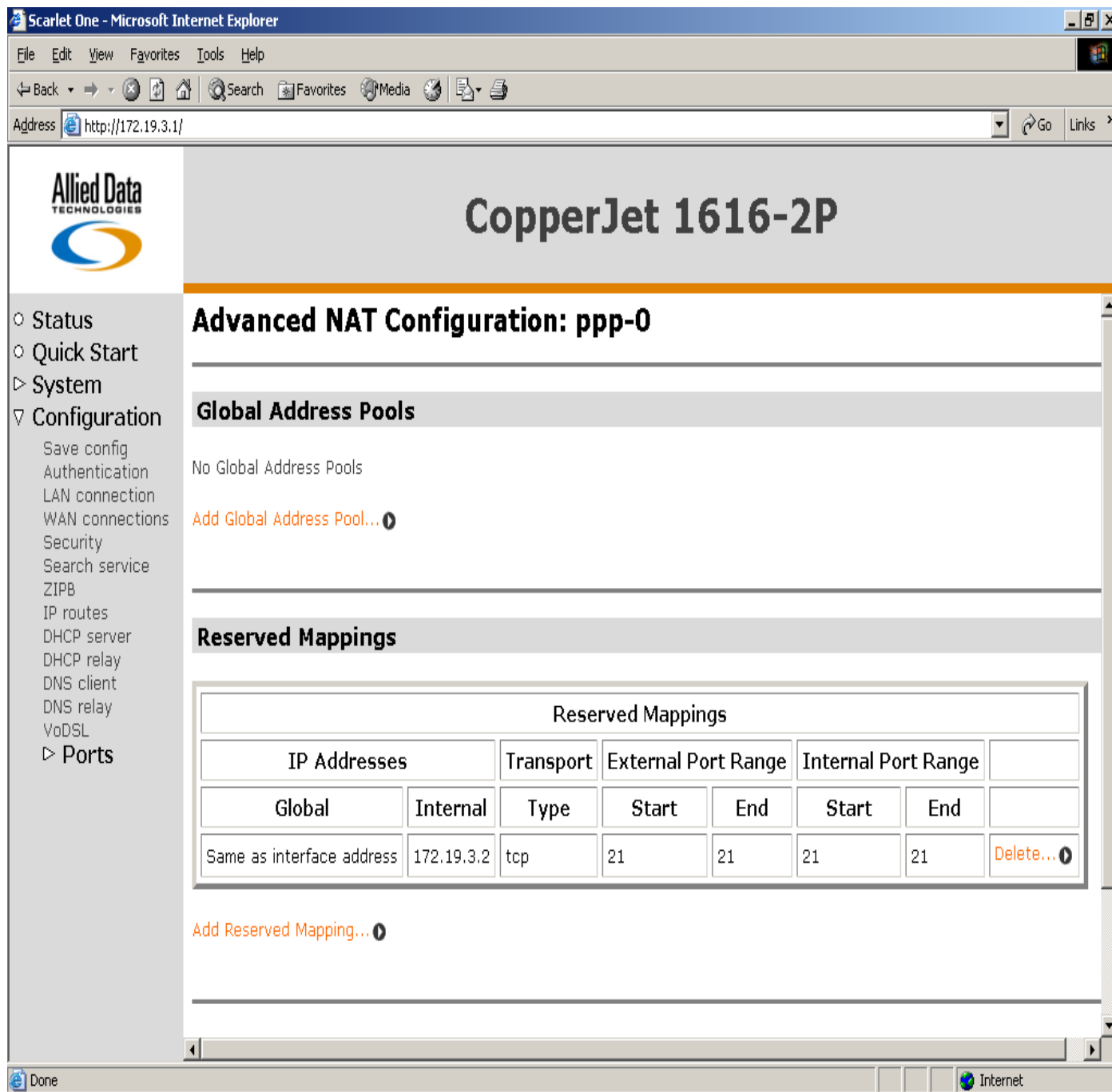


The screenshot shows a web browser window titled "Scarlet One - Microsoft Internet Explorer" with the address bar set to "http://172.19.3.1/". The page content includes the Allied Data Technologies logo, the title "CopperJet 1616-2P", and a navigation menu on the left. The main content area is titled "NAT Add Reserved Mapping: ppp-0" and contains a section for "Add Reserved Mapping".

IP Addresses		Transport	External Port Range		Internal Port Range	
Global	Internal	Type	Start	End	Start	End
0.0.0.0 <small>(Set to 0.0.0.0 to use the primary IP address of the interface "ppp-0")</small>	172.19.3.2	tcp	21	21	21	21

Below the table is an "Add Reserved Mapping" button. At the bottom of the page, there are two links: "Return to NAT Configuration" and "Return to Interface List". The footer contains the text "Copyright (c) 2006 Scarlet Terms and conditions".

Fill in the correct information. In this example port 21 will be opened. Of course this can be a Port Range also if desired. Choose the desired transport type or select all if not known. Keep the Global IP adres on 0.0.0.0. The local IP address should be in the same subnet range as the CopperJet, in this example 172.19..... Click on Add Reserved Mapping if all fields are filled in correctly.



Advanced NAT Configuration: ppp-0

Global Address Pools

No Global Address Pools

[Add Global Address Pool...](#)

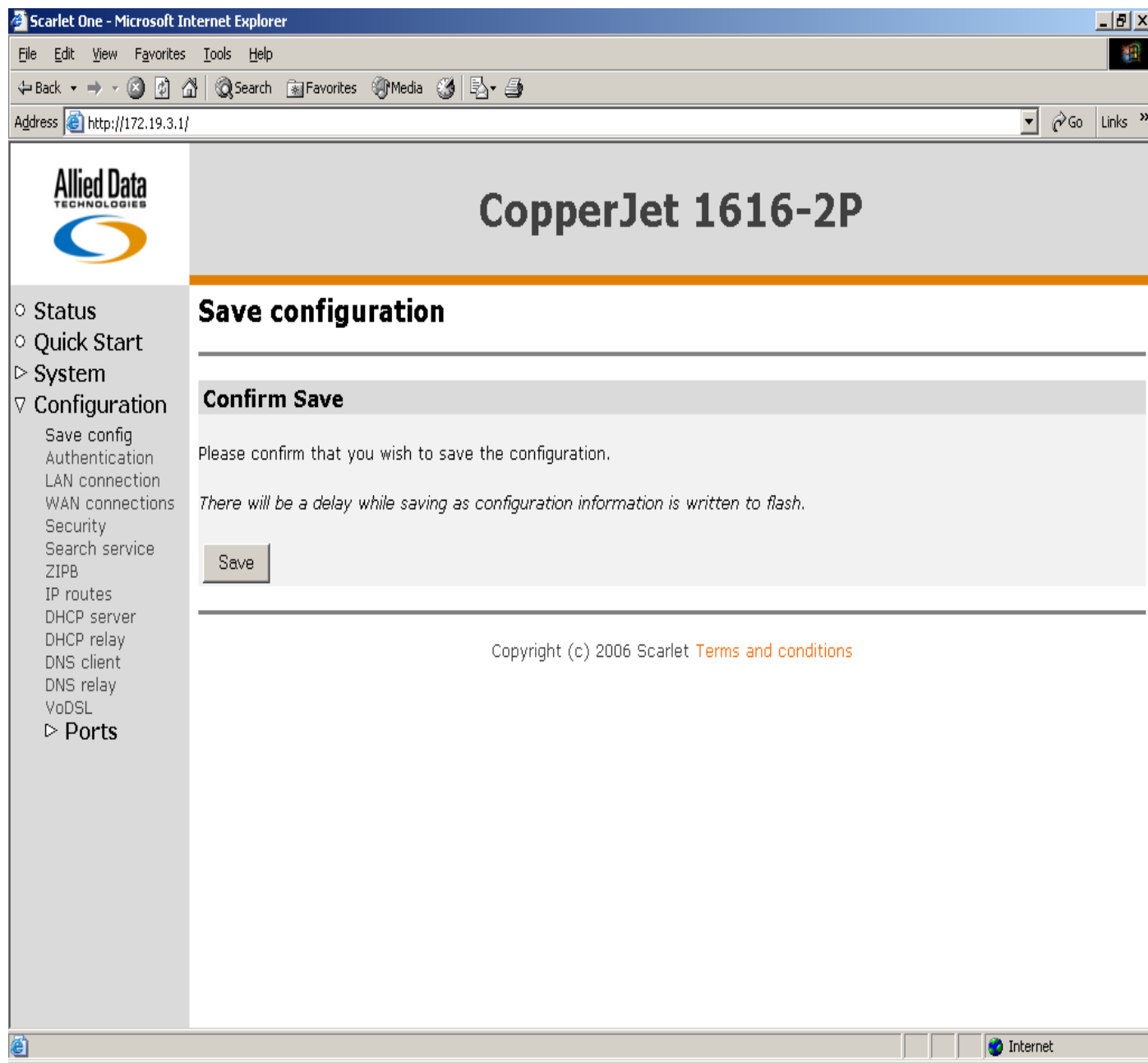
Reserved Mappings

Reserved Mappings							
IP Addresses		Transport	External Port Range		Internal Port Range		
Global	Internal	Type	Start	End	Start	End	
Same as interface address	172.19.3.2	tcp	21	21	21	21	Delete...

[Add Reserved Mapping...](#)

Don't forget to click on Save config to store the information. Therefore choose Configuration in the web interface.

Choose Save config and click on the button Save.
See the illustration below:



NOTE:

If you configure the CopperJet as a bridge, there is no need to open ports (Reserved Mappings) in the CopperJet. Your provider should support / allow this setting.
The CopperJet is now transparent, so a good firewall is necessary.